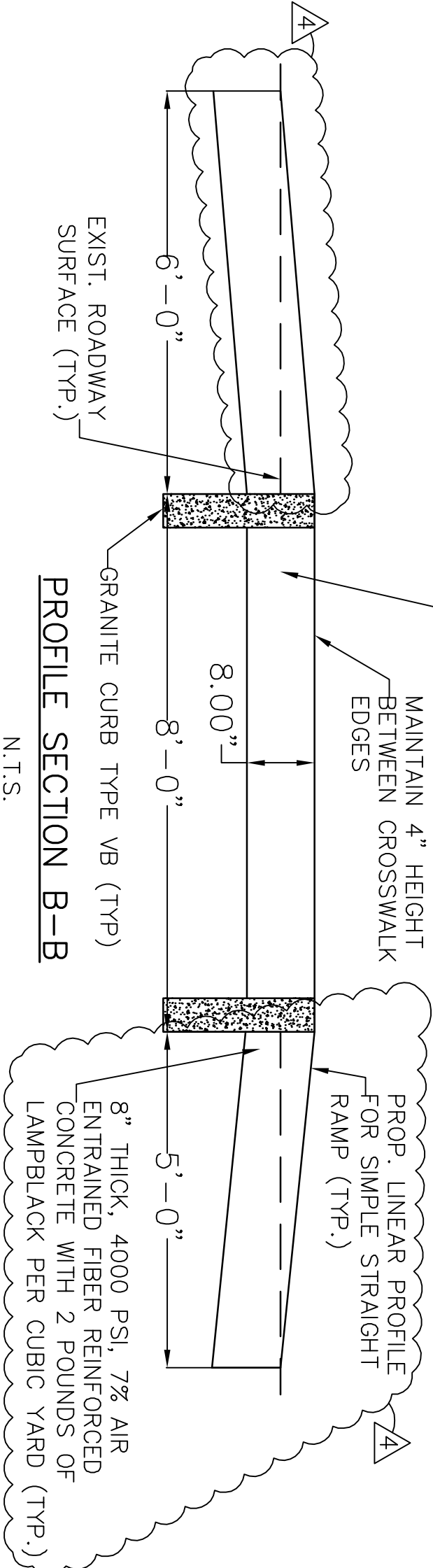
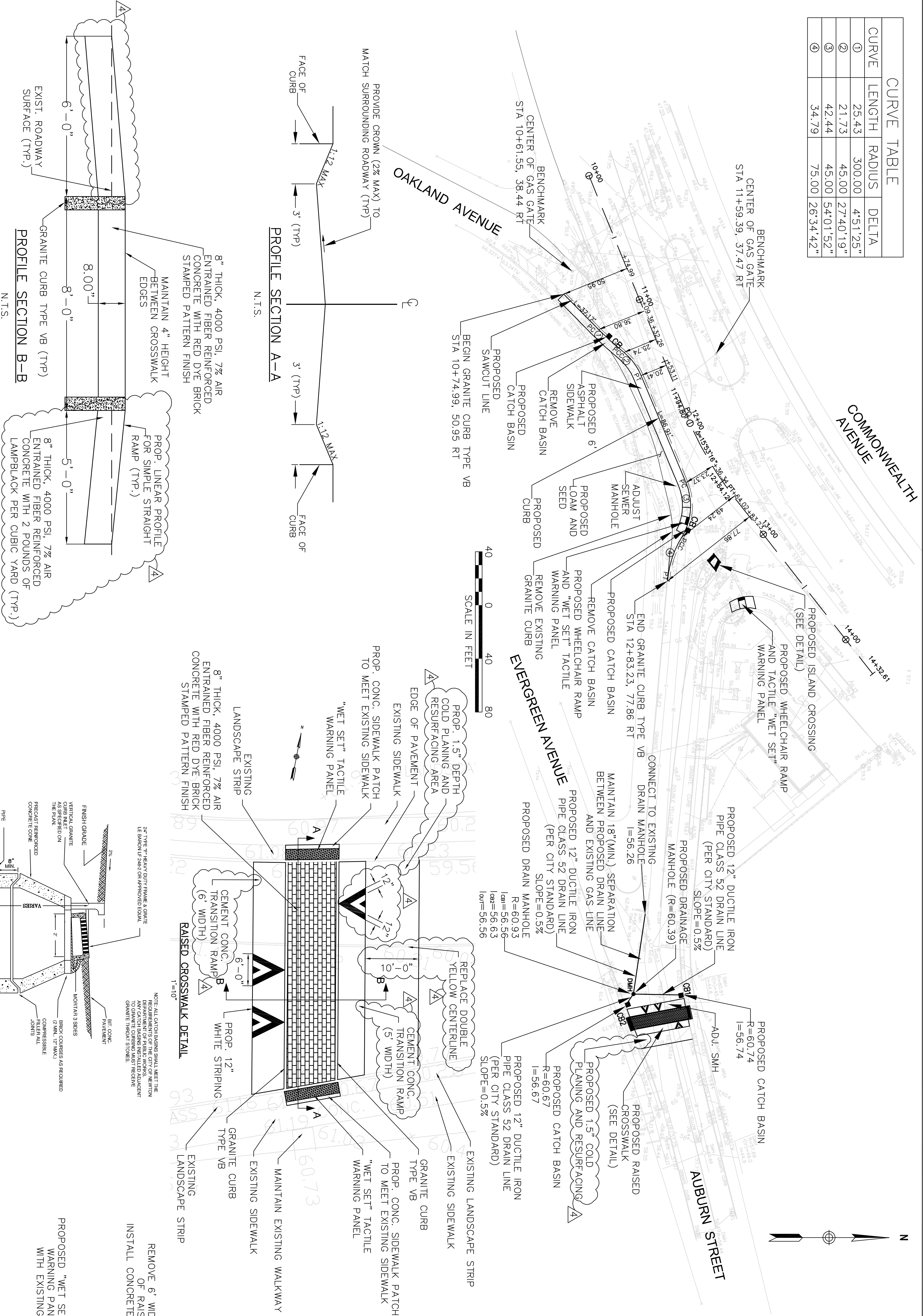


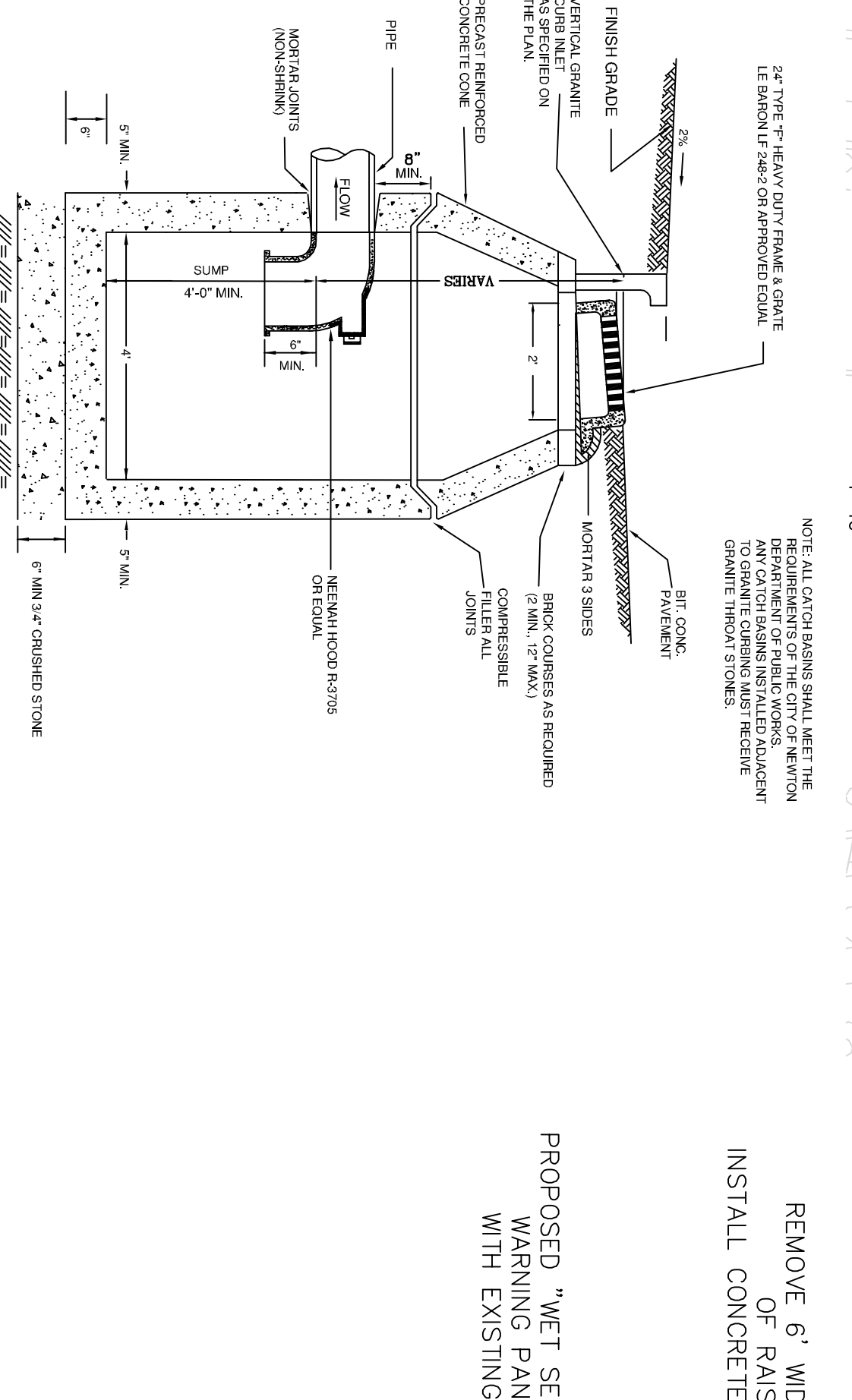
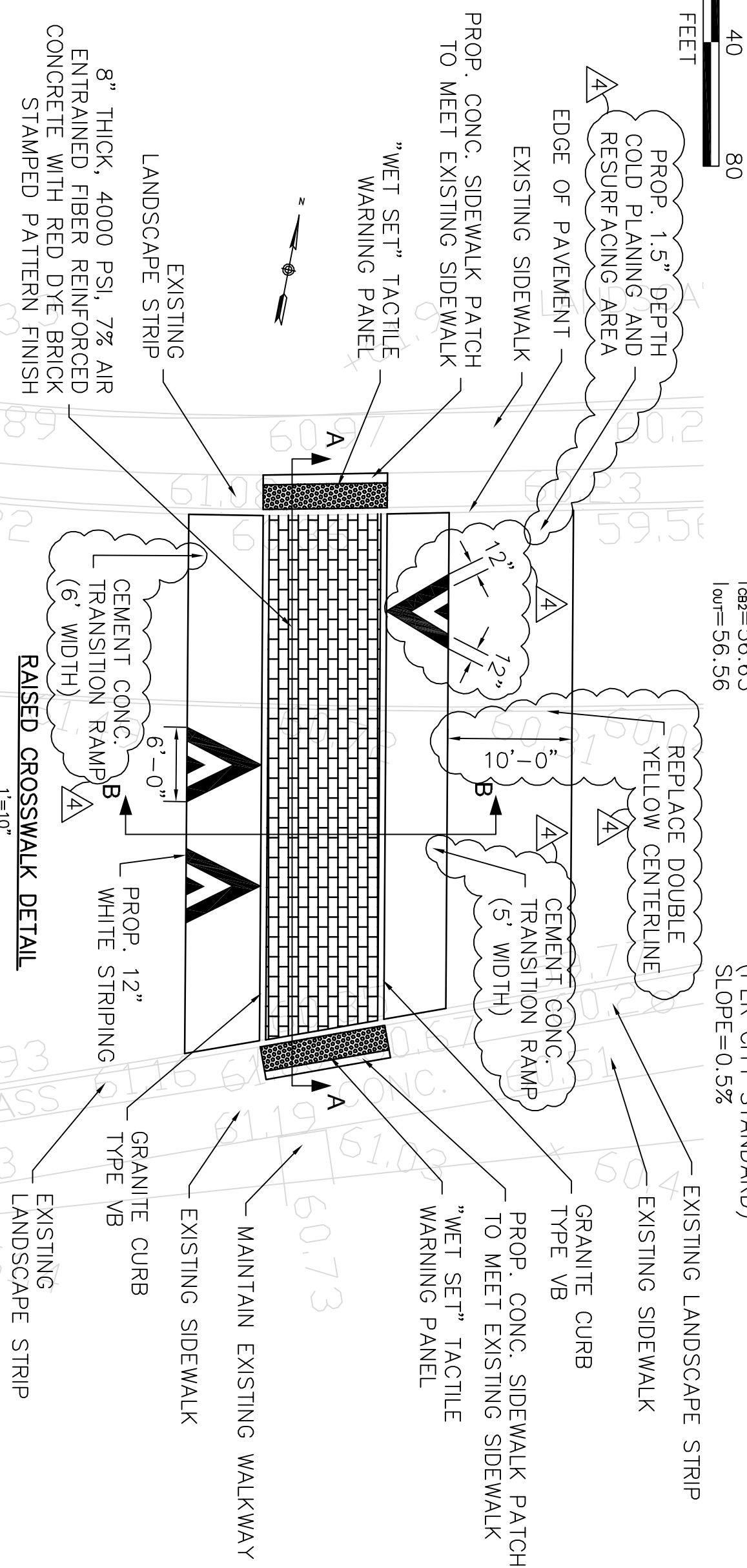
CURVE	LENGTH	RADIUS	DELTA
①	25.43	300.00	45.125"
②	21.73	45.00	27.4019"
③	42.44	45.00	54.0152"
④	34.79	75.00	26.3442"

CURVE TABLE



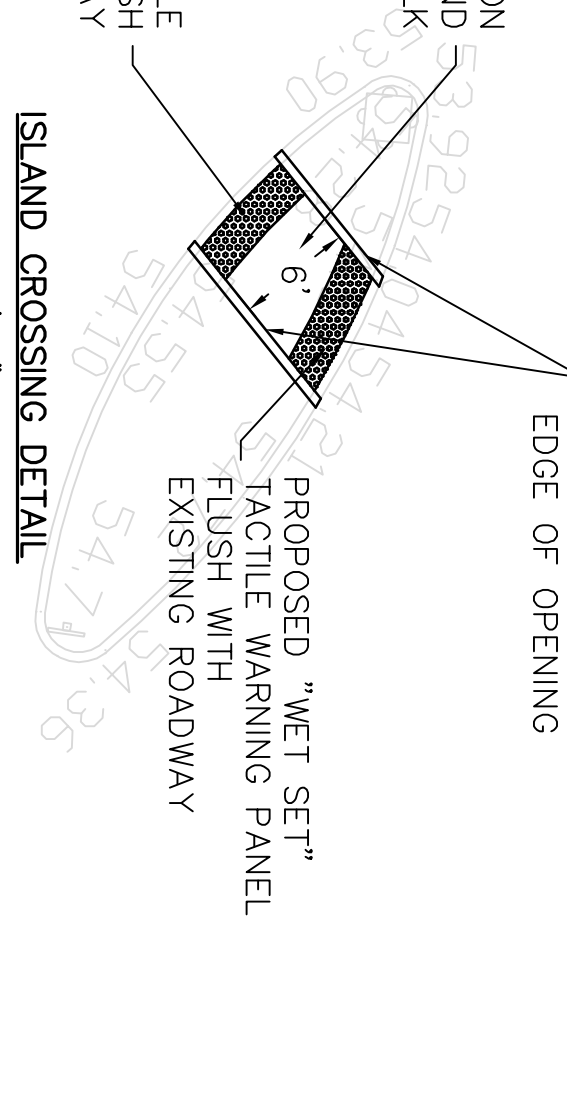
PAVEMENT NOTES

- PROPOSED HOT MIX ASPHALT SIDEWALK**
- SURFACE:** 3" HOT MIX ASPHALT (TYPE I-1 BITUMINOUS CONCRETE) PLACED IN 1.5" BINDER AND 1.5" TOP COURSE
- FOUNDATION:** 8" GRAVEL BORROW, TYPE B
- PROPOSED CEMENT CONCRETE WHEELCHAIR RAMP**
- SURFACE:** 4" CEMENT CONCRETE (7% AIR ENTRAINED) 4000 PSI, 3/4", 610, WITH 2 POUNDS OF LAMPBLACK PER CUBIC YARD
- FOUNDATION:** 8" GRAVEL BORROW, TYPE B
- PROPOSED COLD PLANING AND RESURFACING AREA**
- SURFACE:** 1.5" HOT MIX ASPHALT (TYPE I-1 BITUMINOUS CONCRETE) TOP COURSE MATERIAL



NOTES:

1. THE CITY OF NEWTON GENERAL CONSTRUCTION STANDARDS, THE 1988 MASSHIGHWAY STANDARD SPECIFICATIONS FOR HIGHWAY AND BRIDGES, THE SUPPLEMENTAL SPECIFICATIONS DATED JUNE 6, 2006, THE STANDARD SPECIAL PROVISIONS DATED NOVEMBER 20, 2007, THE 1977 CONSTRUCTION STANDARDS, THE 2003 MANUAL ON UNIFORM ENGLISH SUPPLEMENTAL DRAWINGS, THE 2003 MANUAL ON UNIFORM TRAFFIC CONTROL DEVICES FOR STREETS AND HIGHWAYS, THE 1968 STANDARD DRAWINGS FOR TRAFFIC SIGNALS AND HIGHWAY LIGHTING, ALL CURRENT ENGINEERING DIRECTIVES, AND THE LATEST EDITION OF AMERICAN STANDARD FOR NURSERY STOCK WILL GOVERN.
2. THE CONTRACTOR IS RESPONSIBLE FOR CONTACTING THE CITY OF NEWTON DEPARTMENT OF PUBLIC WORKS ENGINEERING DIVISION AND SCHEDULING AN APPOINTMENT 48 HOURS PRIOR TO THE DATE WHEN UTILITIES WILL BE MADE AVAILABLE FOR AN INSPECTION. THE UTILITY IN QUESTION SHALL BE FULLY EXPOSED FOR THE INSPECTOR TO VIEW. BACKFILLING SHALL ONLY TAKE PLACE UPON APPROVAL OF THE CITY'S INSPECTOR.
3. THE APPLICANT WILL HAVE TO APPLY FOR STREET OPENING, SIDEWALK CROSSING, CURB INSTALLATION, AND UTILITIES CONNECTING PERMITS WITH THE CITY OF NEWTON DEPARTMENT OF PUBLIC WORKS PRIOR TO ANY CONSTRUCTION.
4. PRIOR TO THE OCCUPANCY PERMIT BEING ISSUED, AN AS-BUILT PLAN SHALL BE SUBMITTED TO ENGINEERING DIVISION SHOWING ALL UTILITIES AND FINAL GRADES, ANY EASEMENTS AND FINAL GRADING.
5. IF A CERTIFICATE OF OCCUPANCY IS REQUESTED PRIOR TO ALL SITE WORK BEING COMPLETED, THE APPLICANT WILL BE REQUIRED TO POST A CERTIFIED BANK CHECK IN THE AMOUNT TO COVER THE REMAINING WORK. THE CITY ENGINEER SHALL DETERMINE THE VALUE OF THE UNCOMPLETED WORK.
6. ALL PROPOSED DRAINAGE STRUCTURES, INCLUDING CATCH BASINS, FRAMES AND COVERS, DRAIN MANHOLES, AND PIPE SHALL CONFORM TO THE CITY OF NEWTON GENERAL CONSTRUCTION STANDARDS. ALL TRENCHES MUST CONFORM TO THE CITY OF NEWTON CONSTRUCTION STANDARD 19 - TYPICAL C.O.F. (CONTROLLED DENSITY FILL) TRENCH SECTION.
7. TACTILE WARNING PANELS FOR WHEELCHAIR RAMPS SHALL BE ADA SOLUTIONS (OR EQUIVALENT) COMPOSITE (WET SET) REPLACEMENT TACTILE PANELS, BRIGHT YELLOW COLOR.
8. IT IS RECOMMENDED THAT A TEMPLATE BE CONSTRUCTED TO VERIFY THE ACCURACY OF THE RAMP PROFILE, AND TO ENSURE THAT THE DESIRED VERTICAL DIMENSIONS ARE ATTAINED WITHIN REASONABLE TOLERANCES (NOMINALLY ONE-HALF INCH OR LESS). IF THE PROFILE IS INCORRECT, HOME CHARACTERISTICS WILL BE CHANGED THAT MIGHT IMPACT TRAFFIC SAFETY OR CREATE INEFFECTIVE SPEED CONTROL.
9. CONTRACTOR SHALL SCOPE EXISTING PAVEMENT AT LOCATION OF PROPOSED RAISED CROSSWALK, TRANSITION RAMPS PRIOR TO INSTALLATION. CONTRACTOR MAY USE THE EXISTING PAVEMENT BASE IN LIEU OF REBUILDING WITH NEW MATERIAL, PROVIDED THAT HE CAN DETERMINE THE SUITABILITY OF THE BASE MATERIAL WITH AS-BUILT PLANS OR GEOTECHNICAL REPORTS.
10. BITUMINOUS CONCRETE SHALL BE PLACED IN LAYERS NOT EXCEEDING 1.75". THICKER SECTIONS MUST BE PLACED IN TWO OR MORE LAYERS.
11. THE CONTRACTOR SHALL PERFORM A CCTV INSPECTION OF THE EXISTING DRAINAGE SYSTEM, FROM THE DRAIN MANHOLE TO WHICH CONNECTIONS ARE PROPOSED TO THE NEXT DOWNSTREAM DRAIN MANHOLE. THIS INSPECTION MUST BE WITNESSED BY A REPRESENTATIVE OF THE ENGINEERING DIVISION AND MUST BE PERFORMED PRIOR TO THE CONSTRUCTION.
12. SEE SHEET 3 OF 4 FOR DRAINAGE PROFILE.



DRAFT - NOT FOR CONSTRUCTION



45 Brimfield Street, 6th Floor
 NEWTON, MA 02459
 TEL: (617) 556-0025
 FAX: (617) 556-0025

COMMONWEALTH AVENUE (ROUTE 30) & AUBURN STREET

GEOMETRY PLAN

Hess Corporation
 Newton, Massachusetts

SCALE: AS SHOWN	SHEET NO. 2	TOTAL SHEETS 4
DATE: 7/25/08		

DESIGNED BY:	REVISIONS
AEL	
AEL	
SCF	
8/15/08	INCORPORATE COMMENTS - FINAL CONSTRUCTION PLANS
9/18/08	NO CHANGES TO THIS SHEET

DESIGNED BY:	REVISIONS
AEL	
AEL	
SCF	
12/15/08	INCORPORATE ALDERMEN & CITY COMMENTS